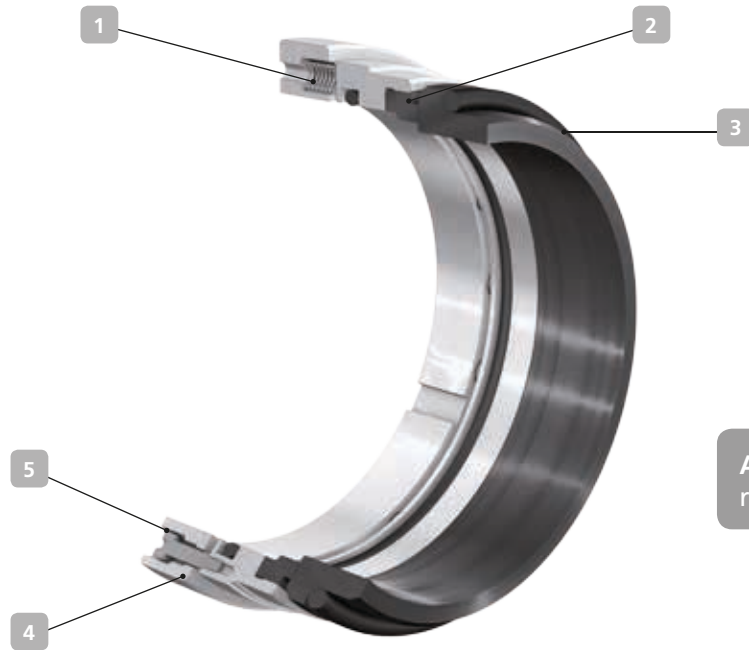


4RD – for KSB's RDLO type series



Applications:
raw, clean and service water

1 Dependable

Dynamic type, multi-spring arrangement, bi-directional and balanced. Sturdy and practical seal design.

2 Robust

The primary ring is shrink-fitted into the metal primary ring carrier. This ensures even contact, also under fluctuating pressure and temperature conditions.

3 Different material variants

Elastomers made of EPDM also available with WRAS approval. Metal parts available in super duplex stainless steel (1.4501) for seawater applications.

4 Service-friendly

Easy to install, no adjusting dimension required. Together with the shaft protecting sleeve and the seal cover, the mechanical seal can be installed like a cartridge.

5 Compact

The primary ring is kept in position in the torque-transmitting element for transport and installation.

Technical description

Design	Single mechanical seal
Type	Dynamic, balanced
Springs	Multi-spring arrangement
Direction of rotation	Bi-directional
Additional information	Various wear part kits available, see ZN3302

Materials

Primary ring	SiC (Q1)
Mating ring	SiC (Q1) / "A" carbon (A) / "B" carbon (B)
Elastomers	EPDM (E) / FKM (V)
Springs	2.4610 (M)
Other Components	1.4571 (G) / 1.4501 (G4)

Other material combinations on request

Technical data

Operating pressure	Up to 25 bar, dynamic Up to 37.5 bar, static
Temperature	0 °C to 140 °C
Shaft unit (seal size)	110 (125), 125 (135), 140 (155), 160 (175)
Business type	Standard (KSB EasySelect)